

What is the Quadro-prox?

The Quadro-prox has a round sensing head that is very much shorter in length than the 'tube' type sensor. It is mounted in a compact square housing with a well secured cable running at right angles to the sensing beam. It has a clearly visible status LED.

The M18 Quadro-prox for example is only 15mm deep including its cable or connector output.

MECHANICAL PROPERTIES

The innovative design of the Quadro-prox has many more advantages.

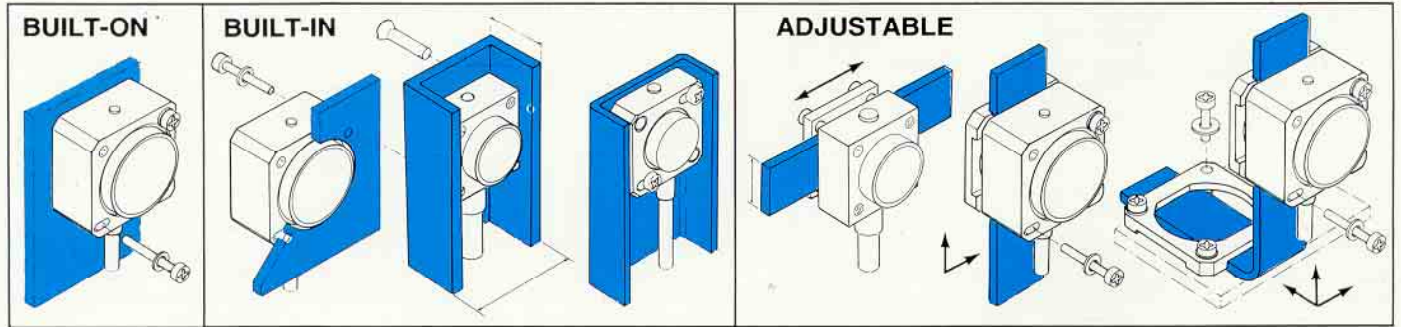
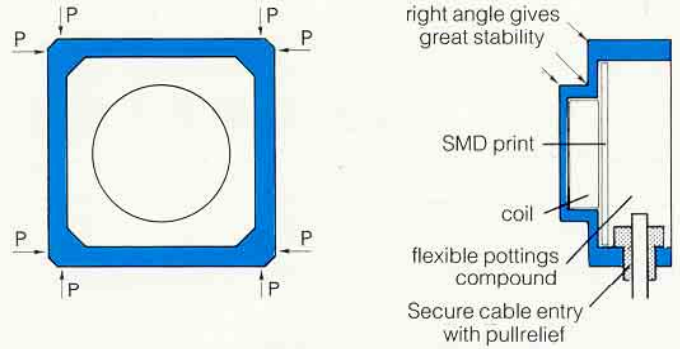
The housing has right-angled sides that give it a very high rigidity. The vulnerable electronics are then mounted in a flexible filling compound. The result is a switch which is highly resilient to shock and vibration - much more so than would be expected from a plastic housing.

Electronically the switch is identical to a barrel type switch.

APPLICATION STORIES

Our polycarbonate Qx30 and Qx40 sensors (equivalent to M18 and M30) were mounted on the head of a piling rig which has a stroke of 80mm and operates 1200 times per minute. After 200 hours and 8 million strokes the sensors were still in perfect working order.

Our metal Qx16 and Qx20 (equivalent to M12 and M18) were mounted on a machine that rolls and bends steel for the manufacture of springs. The traditional sensor had a life span of approximately 3 weeks. The quadroprox was still working perfectly well after 3 years and 20 million cycles.

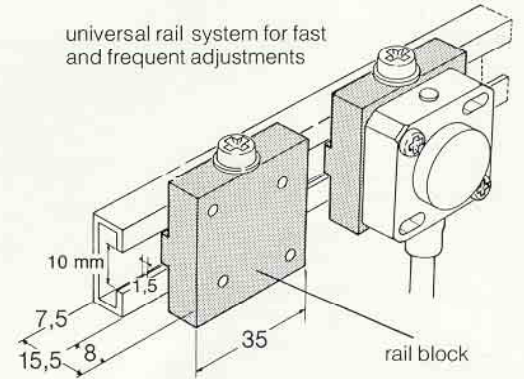
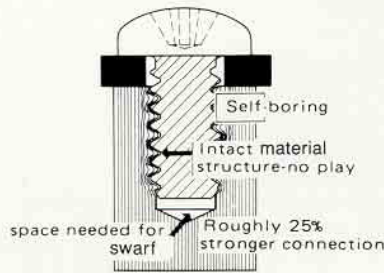


SELF-TAPPING SCREW

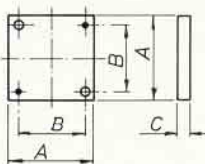
Self-tapping Screw
2 self-tapping screws are included as standard for swifter and simpler mounting

- just bore 2.7 mm holes. Tapping not necessary
- a normal M 3 screw thread is cut
- can be driven home with an electric tool

Can be used with materials such as metal, plastic etc.



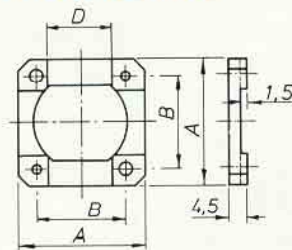
MOUNTING PLATE



mounting plate (aluminium)

Type	A	B	C	order no.
Qx 16	16	12	2,5	MP 16 A
Qx 20	20	16	3	MP 20 A
Qx 35	35	27	4	MP 35 A

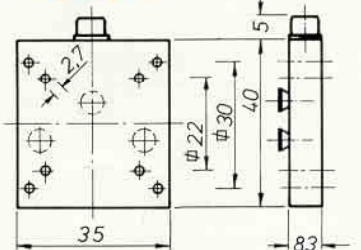
MOUNTING RING



mounting ring (polycarbonate)

Type	A	B	D	order no.
Qx 30	30	22	15	MR 30 K
Qx 40	40	30	25	MR 40 K

RAIL BLOCK



railblock (aluminium)

Type	order no.
Qx 35	AS 40/35
Qx 40	AS 40/35